



# Advoque SafeGuard N95 Particulate Filtering Respirator / ASG100 USER INSTRUCTIONS



## WARNING

This respirator helps protect against certain particles. Misuse may result in sickness or death. For proper use, see supervisor, or User Instructions, or call Advoque SafeGuard in U.S.A., 1-408-560-2990.

## IMPORTANT

Before use, the wearer must read and understand these User Instructions. Keep these instructions for reference.

## BIOLOGICAL PARTICLES

This respirator can help reduce inhalation exposures to certain airborne biological particles (e.g. mold, Mycobacterium tuberculosis, etc.) but cannot eliminate the risk of contracting infection, illness, or disease. OSHA and other government agencies have not established safe exposure limits for these contaminants.

## USE INSTRUCTIONS

1. Failure to follow all instructions and limitations on the use of this respirator and/or failure to wear this respirator during all times of exposure can reduce respirator effectiveness and may result in sickness or death.
2. Before occupational use of this respirator, a written respiratory protection program must be implemented meeting all the local government requirements. In the United States, employers must comply with OSHA 29 CFR 1910.134 which includes medical evaluation, training, and fit testing, and applicable OSHA substance specific standards.
3. The particles which can be dangerous to your health include those so small that you cannot see them.
4. Leave the contaminated area immediately and contact the supervisor if dizziness, irritation, or other distress occurs.
5. When not in use, store the respirator away from contaminated areas.
6. Inspect respirator before each use to ensure that it is in good operating condition. Examine all the respirator parts for signs of damage including the two headbands, staples, nose-clip, and nose-foam. The respirator should be disposed of immediately upon observation of damaged or missing parts. Filtering respirators are to be inspected prior to each use to assure there are no holes in the breathing zone other than the punctures around staples and no damage has occurred. Enlarged holes resulting from ripped or torn filter material around staple punctures are considered damage. Immediately replace the respirator if damaged.
7. The respirator has been tested and small punctures around the staples are normal and do not interfere with the respirator compliance with Part 84 approval requirements. However, (A) filtering facepieces are to be inspected prior to each use to assure there are no holes in the breathing zone other than the punctures around staples and no damage has occurred, and (B) enlarged holes resulting from ripped or torn filter material around staple punctures are considered damage.

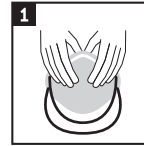
## USE LIMITATIONS

1. This respirator does not supply oxygen. Do not use in atmospheres containing less than 19.5% oxygen.
2. Do not use when concentrations of contaminants are immediately dangerous to life and health, are unknown, or when concentrations exceed 10 times the permissible exposure limit (PEL), or according to specific OSHA standards or applicable government regulations, whichever is lower.
3. Do not alter, abuse or misuse this respirator.
4. Do not use with beards, other facial hair, or other conditions that prevent a good seal between the face and the sealing surface of the respirator.
5. Respirators can help protect your lungs against certain airborne contaminants, however, they will not prevent entry through other routes such as the skin, which would require additional personal protective equipment (PPE).
6. This respirator is designed for workplace/occupational use by adults who are properly trained in their use and limitations. This respirator is not designed to be used by children.
7. Individuals with a compromised respiratory system, such as asthma or emphysema, should consult a physician and must complete a medical evaluation prior to use.

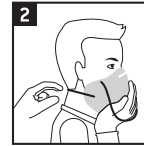
## TIME USE LIMITATION

If respirator becomes damaged, soiled, or breathing becomes difficult, leave the contaminated area immediately and replace the respirator.

## FITMENT INSTRUCTIONS



Straighten the fold of the nose piece with your thumb and index finger, then place your fingertips from both hands at the top of the metal nose-piece.



With nose-piece facing away from face, hold the bottom strap in each hand with the nose-piece facing up. Position the respirator under your chin, pull the bottom strap over your head and position it around your neck, below the ears.

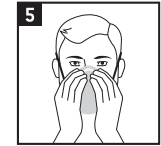


Pull the top strap over your head resting it high at the top of your head.



Using two hands, mold the nose area to the shape of your nose by pushing inward while moving your fingertips down both sides of the nose-piece.

**Warning:** Pinching the nose-piece using one hand may result in improper fit and less effective respirator performance. Use two hands.



Perform a User Seal Check prior to each wearing. To check the respirator-to-face seal, place both hands completely over the respirator and exhale. Be careful not to disturb the position of the respirator. If air leaks around nose, readjust the nose-piece as described in step 4. If air leaks at the respirator edges, work the straps back along the sides of your head. If you CANNOT achieve a proper seal, DO NOT enter the contaminated area. See your supervisor.

## REMOVAL INSTRUCTIONS

See Step 2 of Fitting Instructions and cup respirator in hand to maintain position on face. Pull bottom strap over head. Still holding respirator in position, pull top strap over head and remove respirator.



Advoque SafeGuard  
1040 Richard Ave, Santa Clara, CA 95050  
408-560-2990



This respirator is approved only in the following configuration:

TC-	Protection <sup>1</sup>	Respirator	Cautions and Limitations <sup>2</sup>
		ASG100	
84A-9284	N95	X	A, B, C, J, M, N, O, P

## 1. PROTECTION

N95 – Particulate Filter (95% filter efficiency level). Effective against particulate aerosols free of oil; time use restrictions may apply.

## 2. CAUTIONS AND LIMITATIONS

- A. Not for use in atmospheres containing less than 19.5 percent oxygen.
- B. Not for use in atmospheres immediately dangerous to life or health.
- C. Do not exceed maximum use concentrations established by regulatory standards.
- J. Failure to properly use and maintain this product could result in injury or death.
- M. All approved respirators shall be selected, fitted, used, and maintained in accordance with MSHA, OSHA, and other applicable regulations.
- N. Never substitute, modify, add, or omit parts. Use only exact replacement parts in the configuration as specified by the manufacturer.
- O. Refer to User Instructions, and/or maintenance manuals for information on use and maintenance of these respirators.
- P. NIOSH does not evaluate respirators for use as surgical masks.